



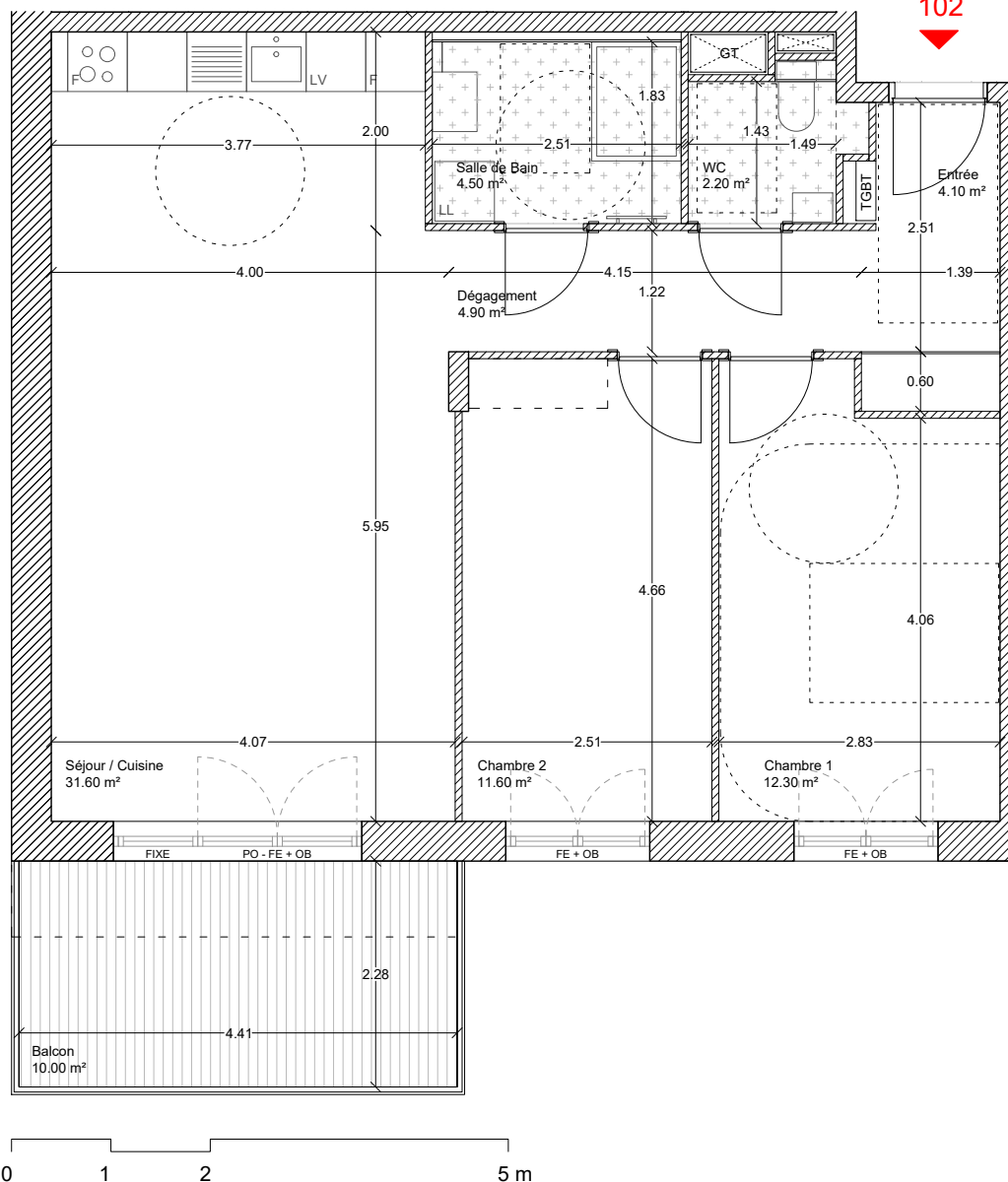
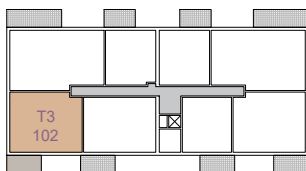
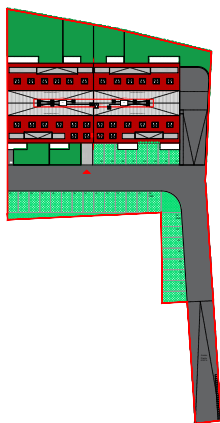
ÉDIFING Stone

102



PLAN DE MASSE

PLAN DE LOCALISATION



PREMIER ETAGE APPARTEMENT 3 PIECES 102

Entrée	4.10 m ²
Dégagement	4.90 m ²
Séjour / Cuisine	31.60 m ²
Chambre 1	12.30 m ²
Chambre 2	11.60 m ²
Salle de bain	4.50 m ²
WC	2.20 m ²

SURFACE HABITABLE 71.20 m²

Balcon	10.00 m ²
--------	----------------------

Version de plan du 29/03/2022