



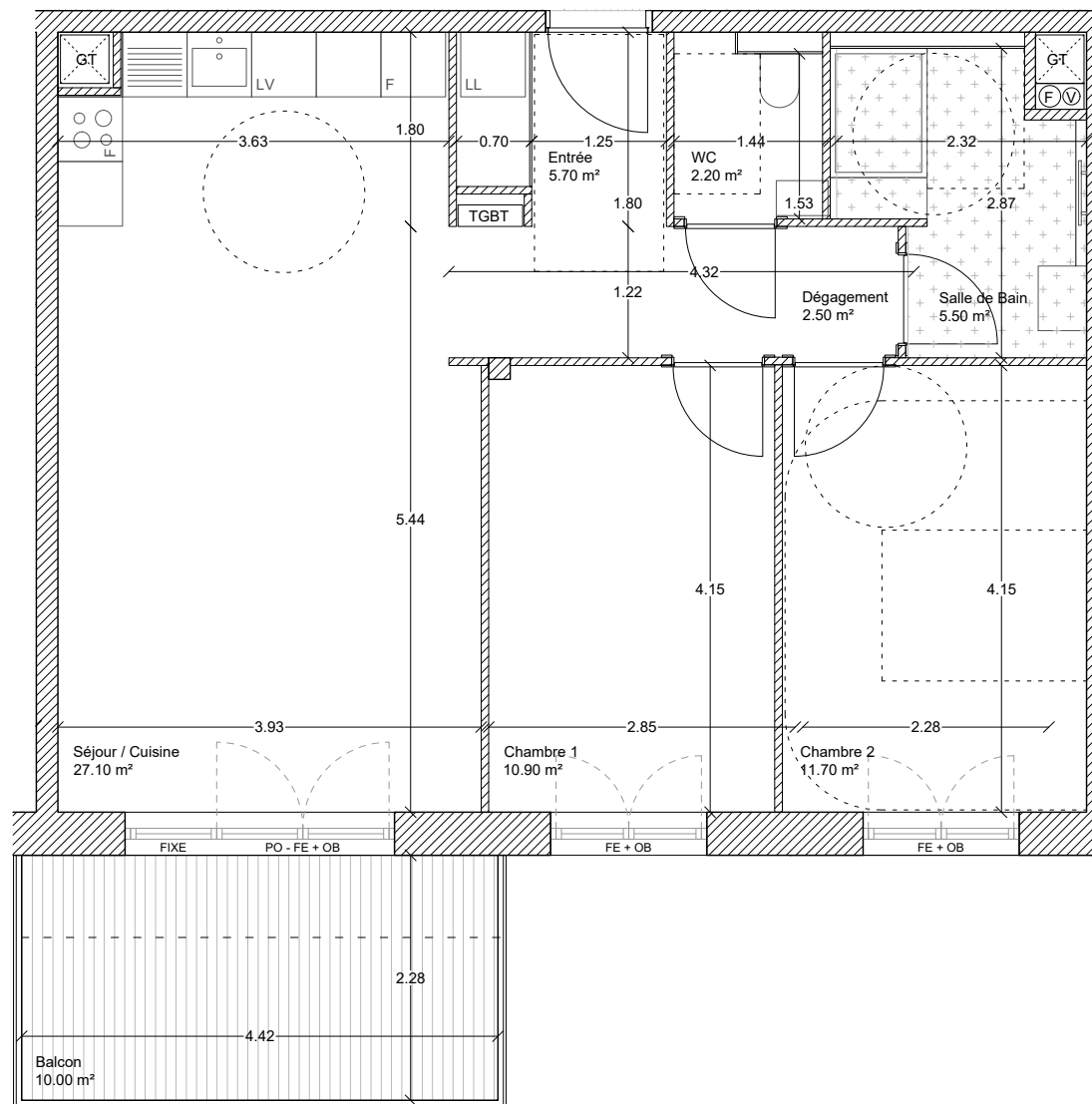
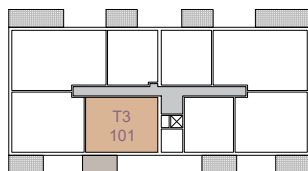
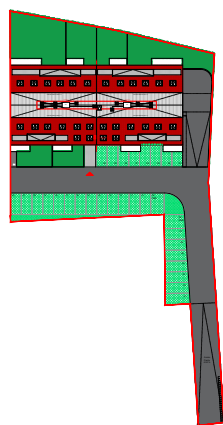
ÉDIFING Stone

101



PLAN DE MASSE

PLAN DE LOCALISATION



PREMIER ETAGE APPARTEMENT 3 PIECES 101

Entrée	5.70 m ²
Dépassement	2.50 m ²
Séjour / Cuisine	27.10 m ²
Chambre 1	10.90 m ²
Chambre 2	11.70 m ²
Salle de bain	5.50 m ²
WC	2.20 m ²

SURFACE HABITABLE 65.60 m²

Balcon 10.00 m²



Version de plan du 29/03/2022



tableau électrique

— sèche serviette



gaine



placard